

1



Our **vision** is to provide high-quality educational opportunities that inspire a community of learners

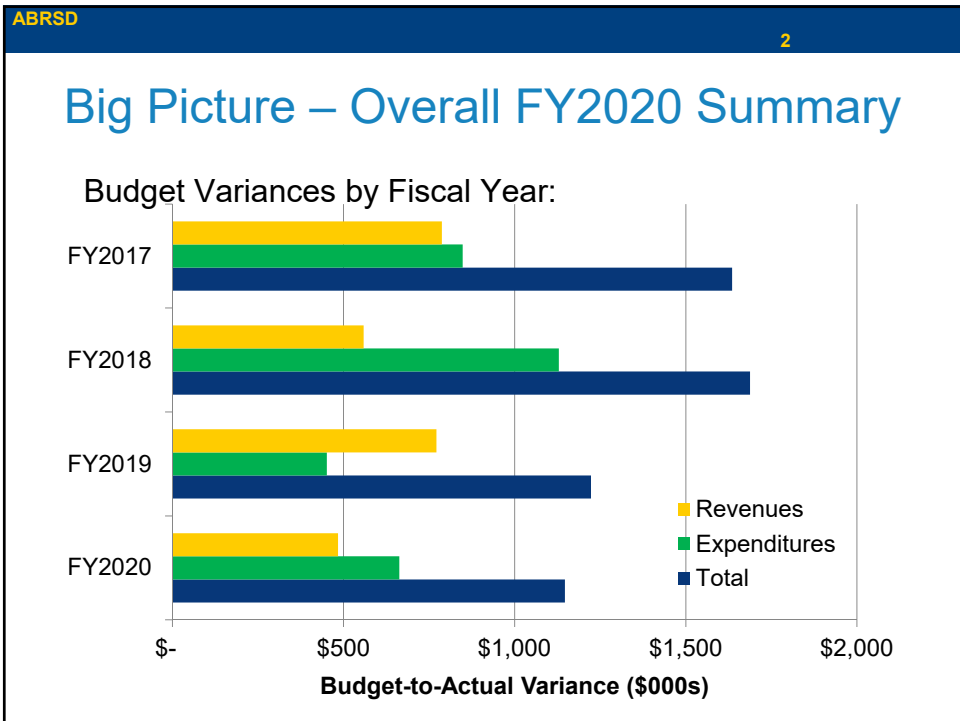
WELLNESS • EQUITY • ENGAGEMENT

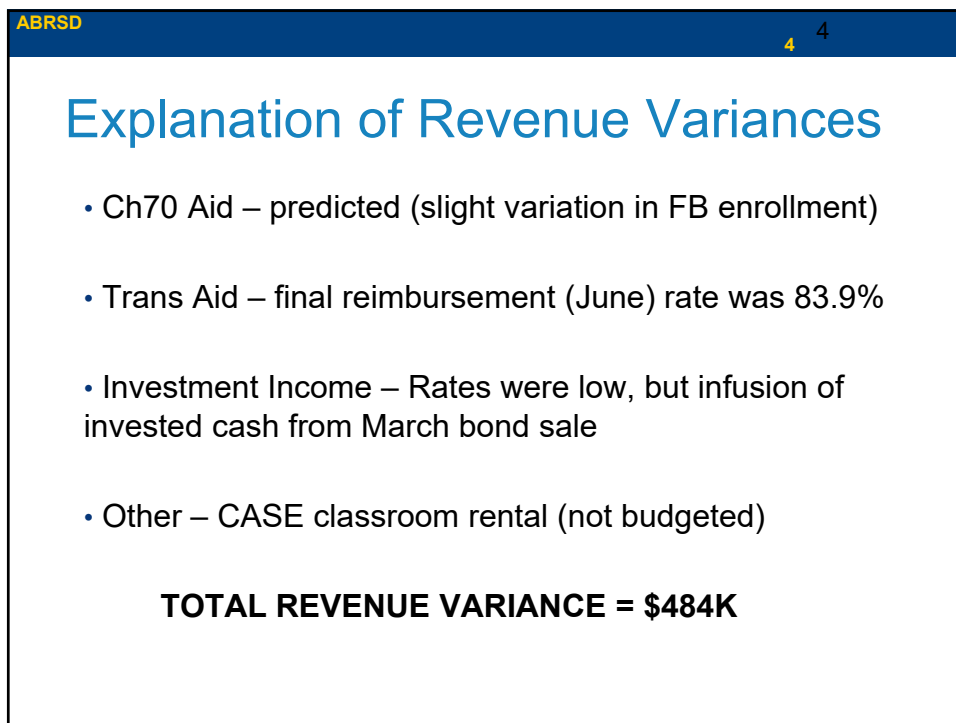
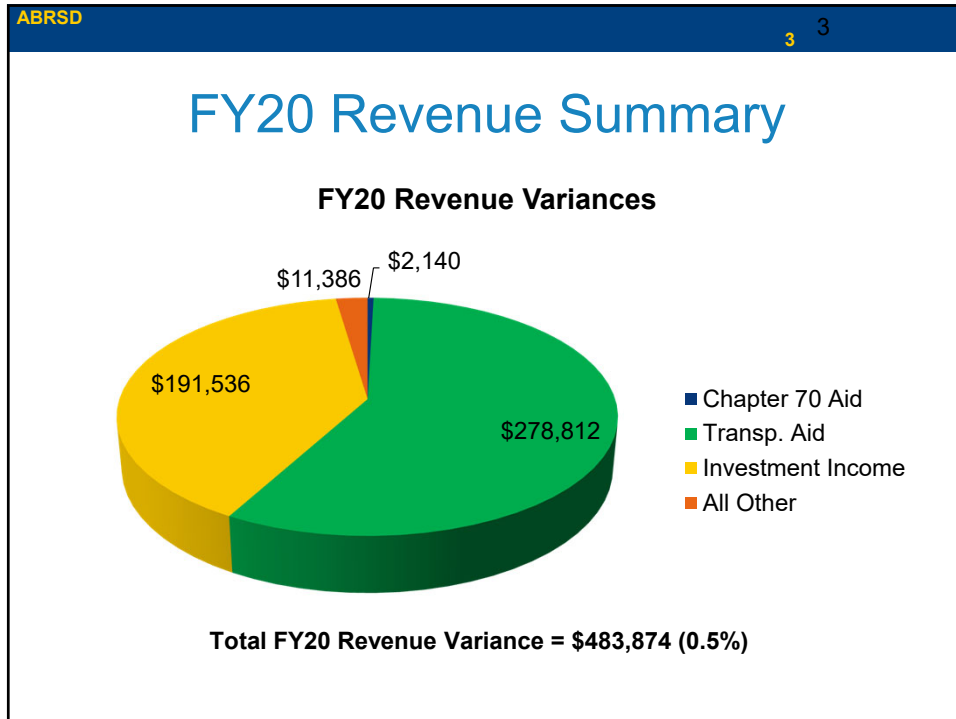
Our **mission** is to develop engaged, well-balanced learners through collaborative, caring relationships

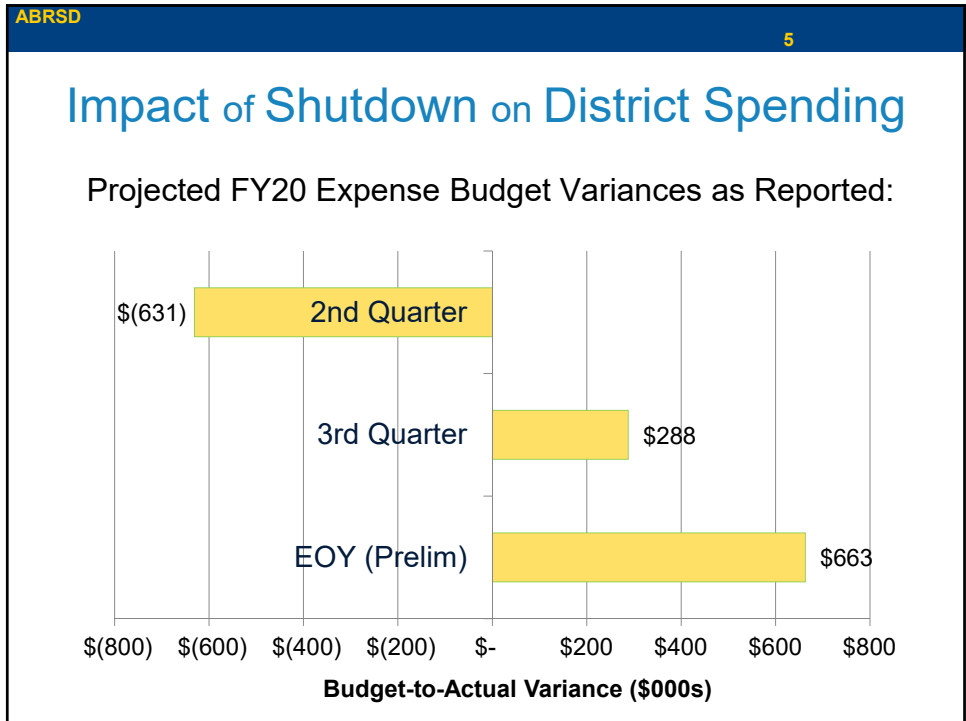
## School Committee FY2020 Preliminary Yearend Financial Update

---

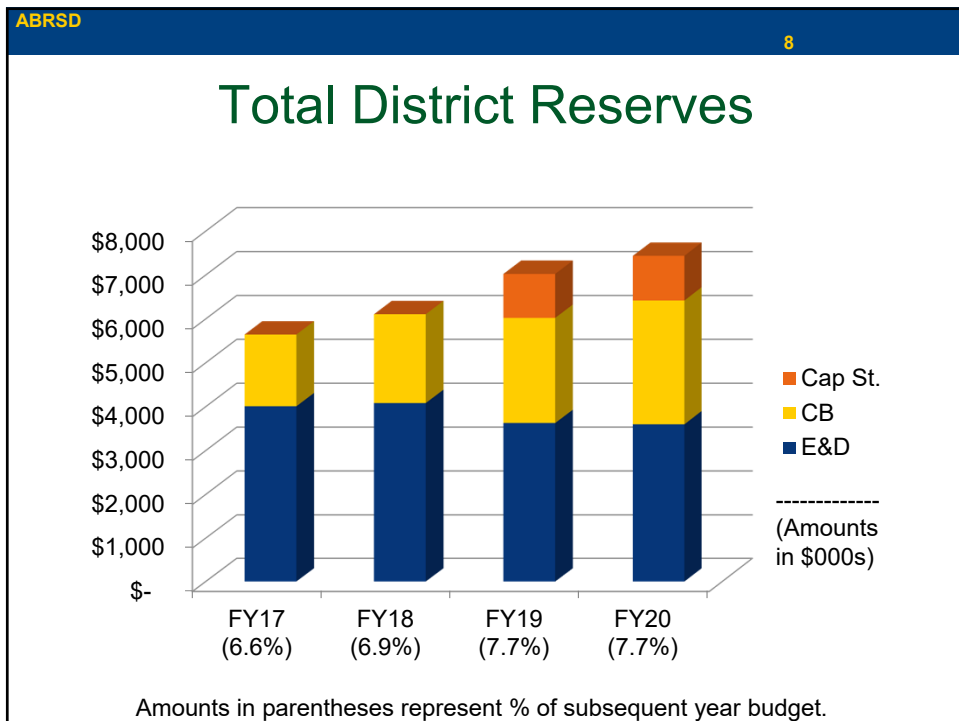
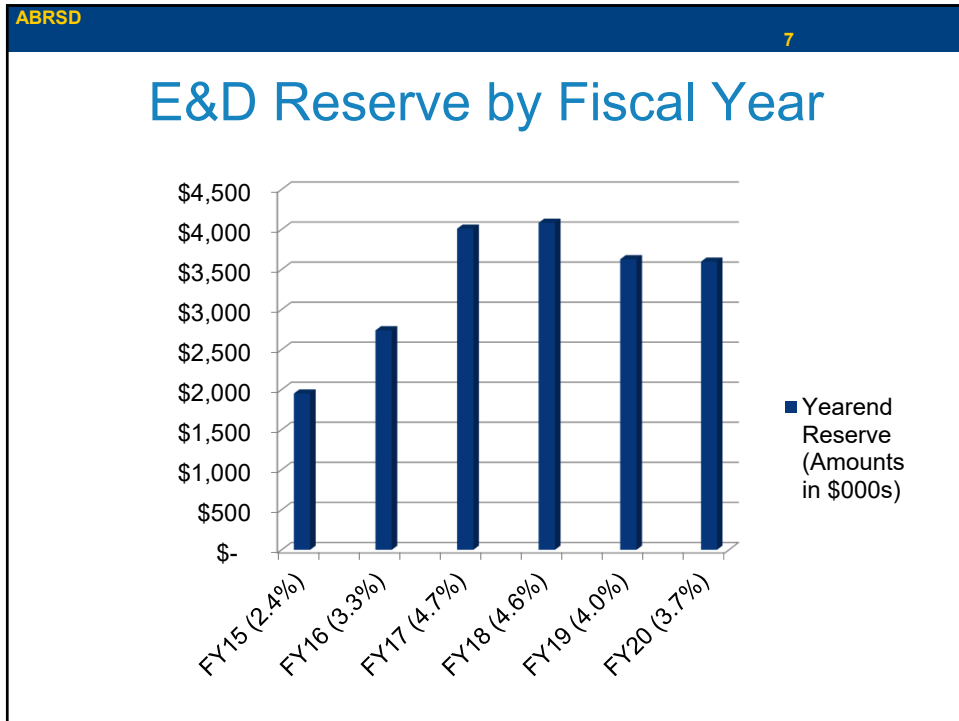
August 27, 2020

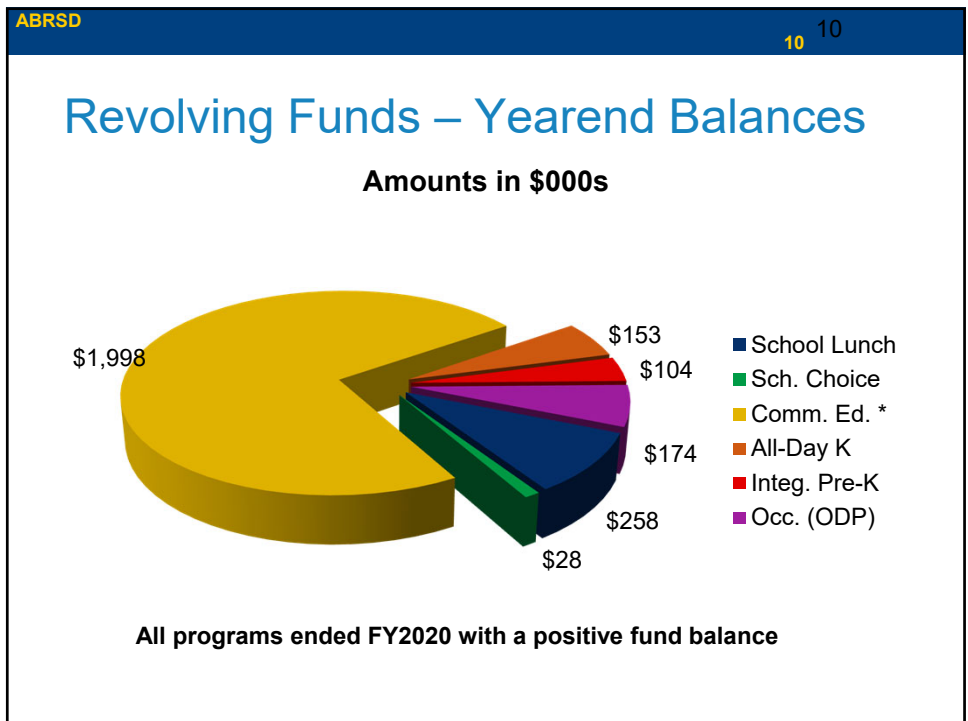
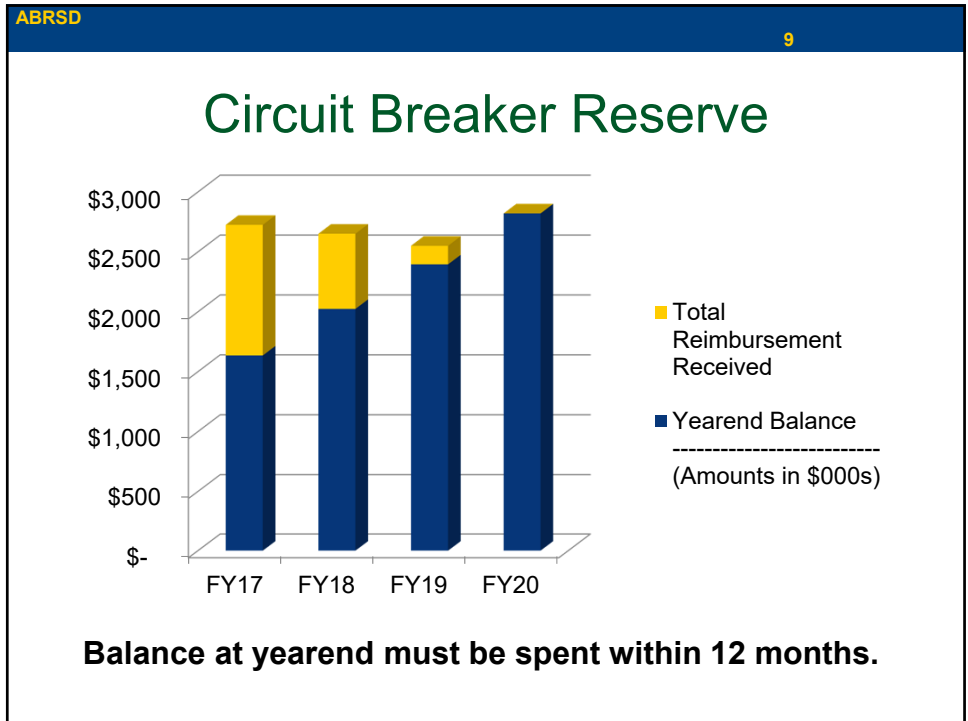






- ABRS 6
- ## Explanation of Expenditure Variances
- Personnel – shutdown resulted in reductions to substitutes, hourly staff, custodians, overtime and athletic coaches
  - Special Ed costs (offset by use of Circuit Breaker Reserve)
  - Utilities & Transportation – shutdown resulted in significant savings in energy and fuel costs
  - Instructional Budgets – interruption of normal operations; spending on supplies, conferences, etc. was put on hold
- TOTAL EXPENDITURE VARIANCE = \$670K**





## What's New for FY2021?

- ➔ Ch. 70 Aid – \$30 PP (minimum) increase was budgeted;  
> but at this point level-funded (no reductions)
- ➔ Other Revenues – no basis yet to determine variances
- ➔ Significant costs of opening in dual remote/hybrid env.  
> Remote staff, Technology for students & staff, PPE
- ➔ Significant federal relief funding to address added costs  
> ESSER; FEMA; CARES Act (Towns); CvRF  
> MA has undistributed relief funds; more to come?
- ➔ FY2022 Budget “Journey” begins; **it will be...different**

## A New Budget Journey Begins

