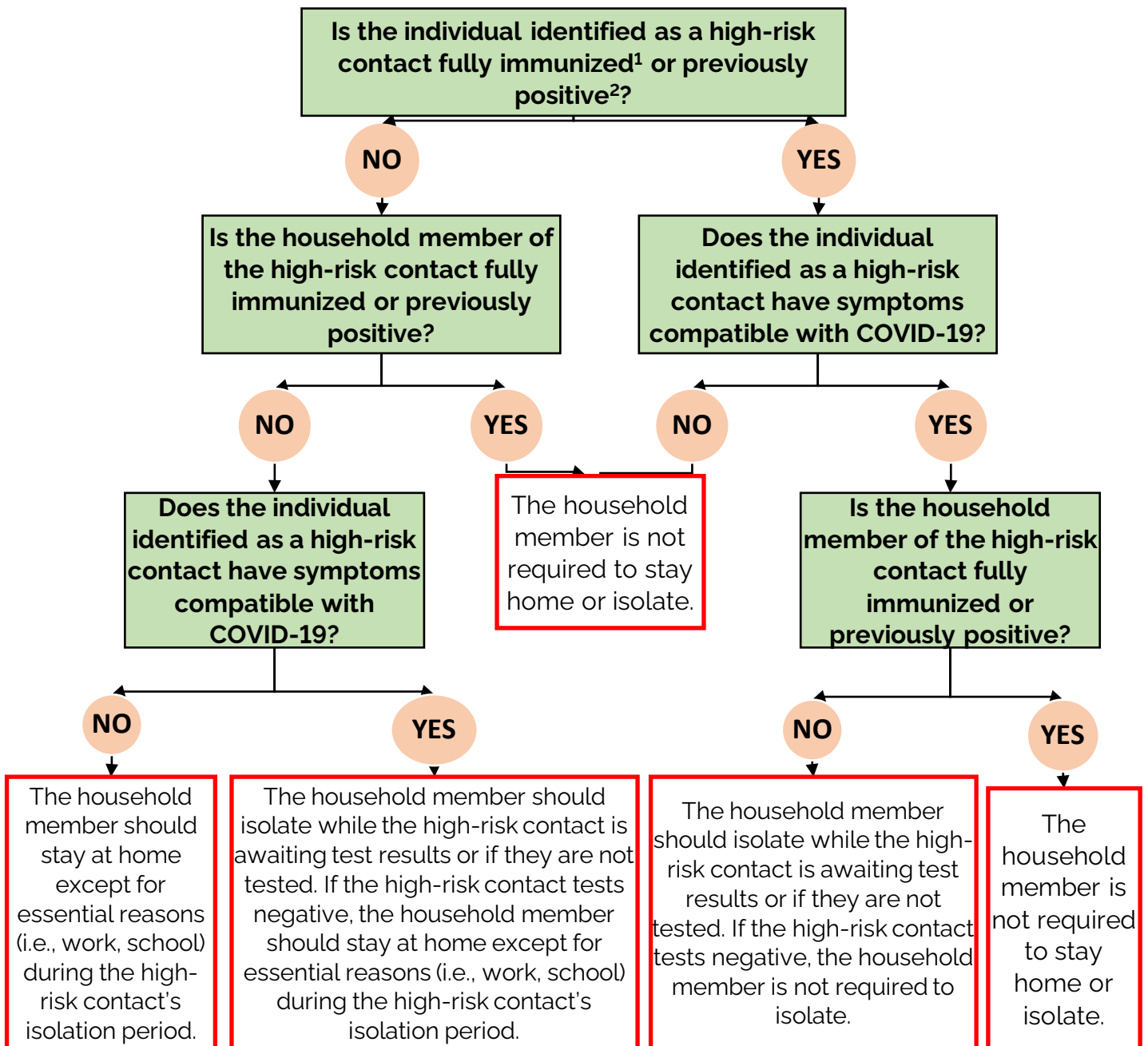


# Appendix B: Case and Contact Management in Schools for Household Members of High-Risk Contacts

Adapted from Appendix 11 of [Management of Cases and Contacts of COVID-19 in Ontario](#)



<sup>1</sup> For the purposes of case/contact/outbreak management, an individual is defined as fully immunized  $\geq 14$  days after receiving their second dose of a two-dose COVID-19 vaccine series or their first dose of a one-dose COVID-19 vaccine series that is [listed for emergency use](#) by the World Health Organization or approved by Health Canada. Individuals who are immunocompromised are excluded from this definition, in accordance with [COVID-19 Fully Immunized and Previously Positive Individuals: Case, Contact and Outbreak Management Interim Guidance](#).

<sup>2</sup> For the purposes of case/contact/outbreak management, an individual is defined as previously positive if they were a confirmed case of COVID-19 where their initial positive result was  $\leq 90$  days ago AND they have been [cleared from their initial infection](#). Individuals who are immunocompromised are excluded from this definition, in accordance with [COVID-19 Fully Immunized and Previously Positive Individuals: Case, Contact and Outbreak Management Interim Guidance](#).